

Warm Up

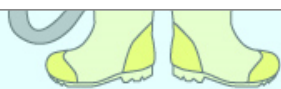
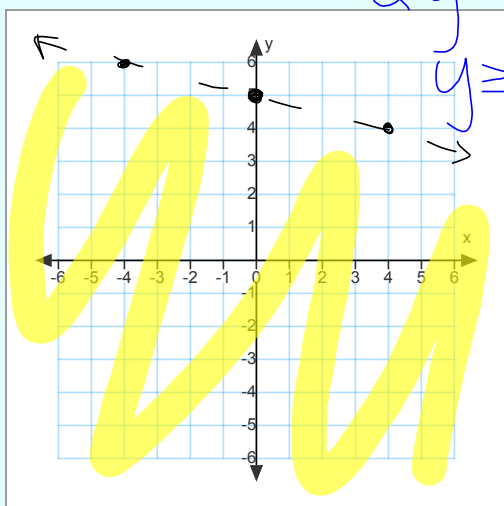
Graph each linear inequality

1. $y < -\frac{1}{4}x + 5$

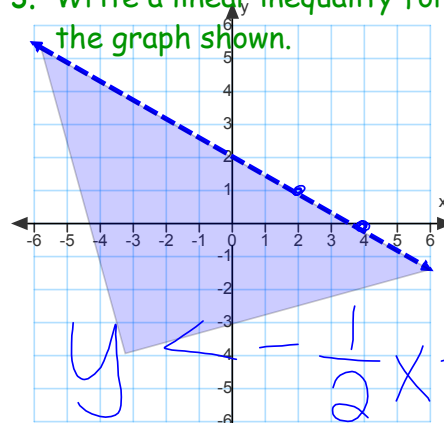
2. $-4x + 2y \geq -8$

$2y \geq 4x - 8$

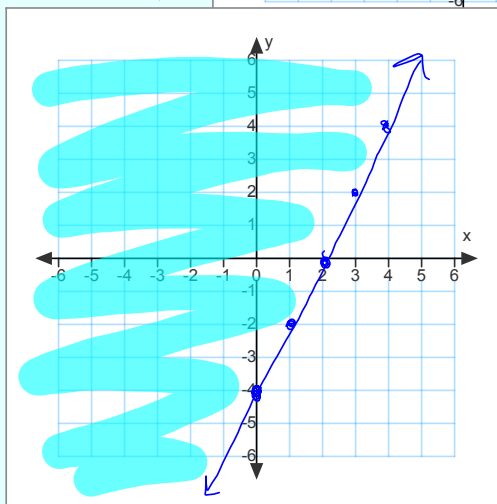
$y \geq 2x - 4$



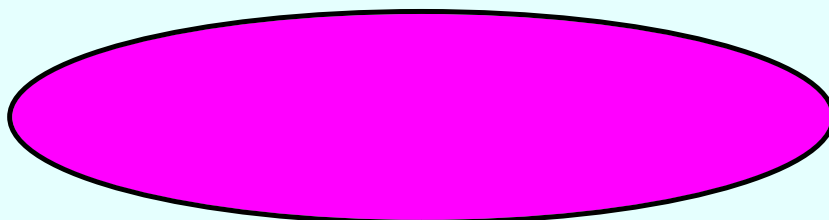
3. Write a linear inequality for the graph shown.



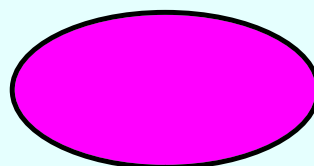
$y < -\frac{1}{2}x + 2$



What do you think a "system of inequalities" would involve?



What do you think a solution of a "system of inequalities" would look like?

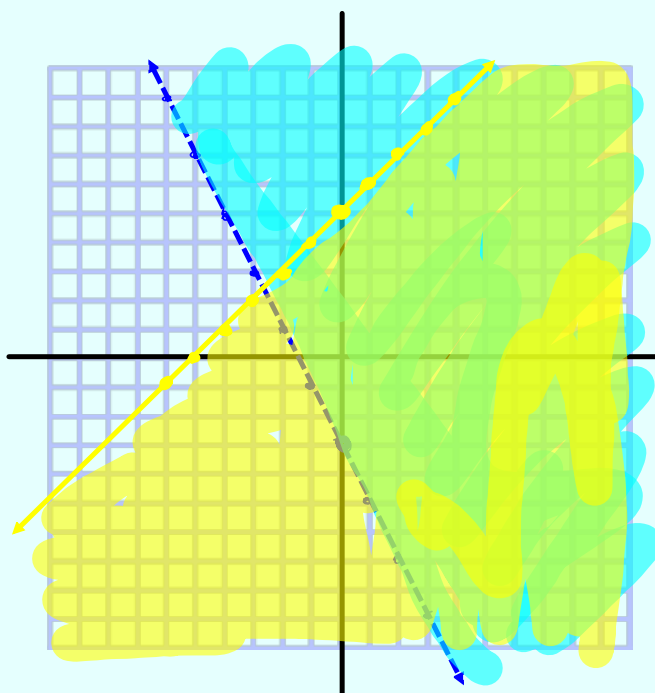


Graph the system of inequalities

$$y > -2x - 3$$

$$y \leq x + 5$$

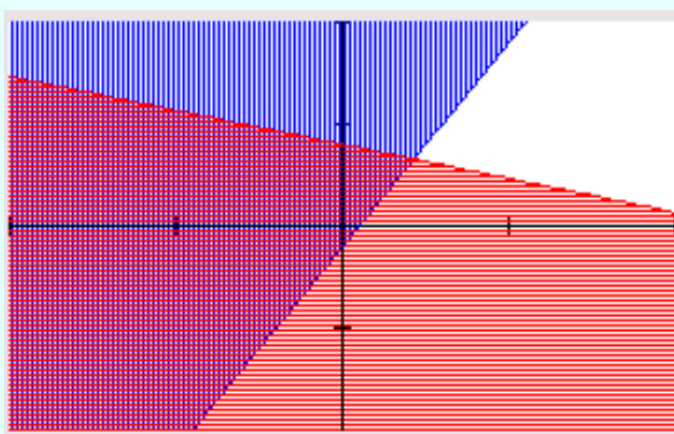
What is the solution for a systems of inequalities?



Graph the system of inequalities with a calculator

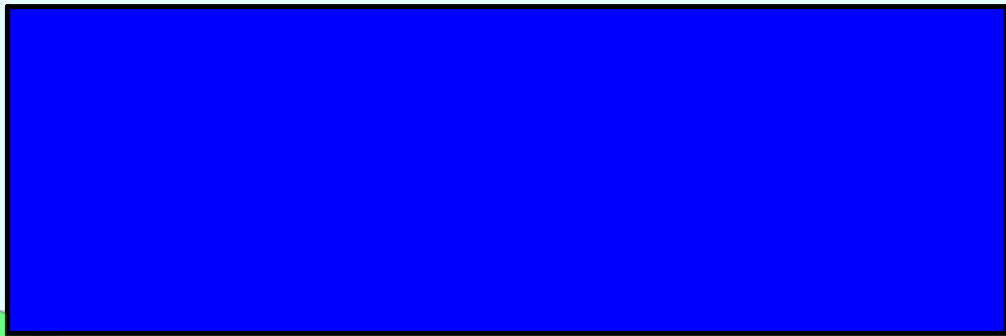
$$y > 2x - 1$$

$$y \leq -\frac{1}{3}x + 4$$



7.6 Homework:

pg 414 #1-10, 13, 16,17



Also, Ch 7 Review Packet is due by Thursday!