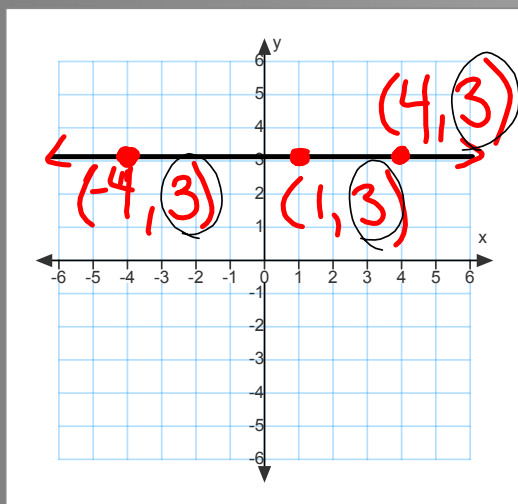


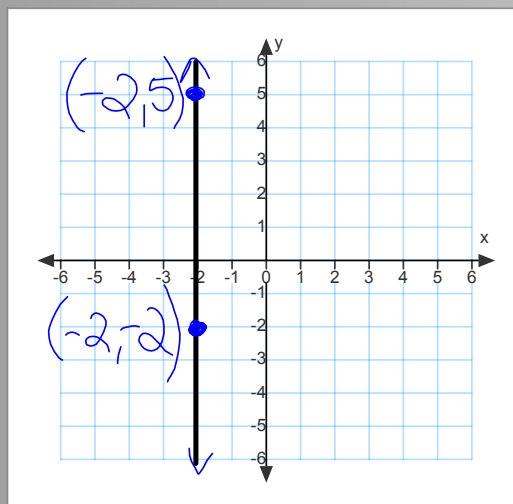
Warm Up-

Graph the following lines

1. $y = 3$



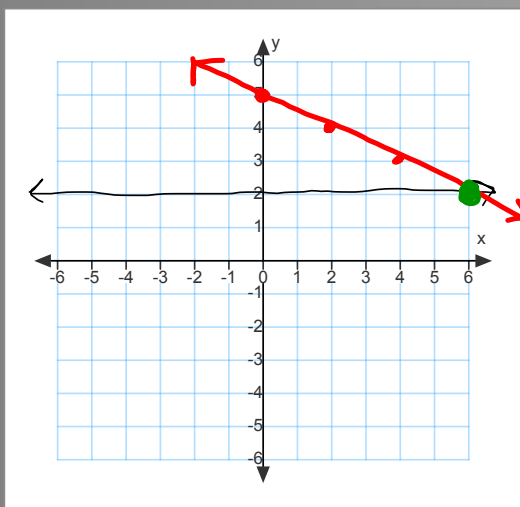
2. $x = -2$



Warm Up-

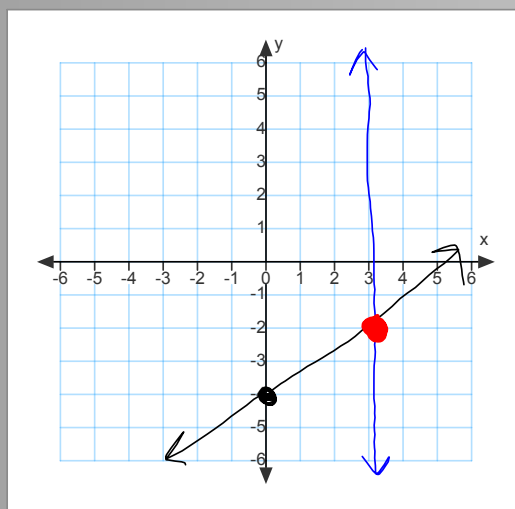
Graph the following systems and find the solution.

3. $y = 2$
 $y = -\frac{1}{2}x + 5$



Solution: (6, 2)

4. $x = 3$
 $y = \frac{2}{3}x - 4$



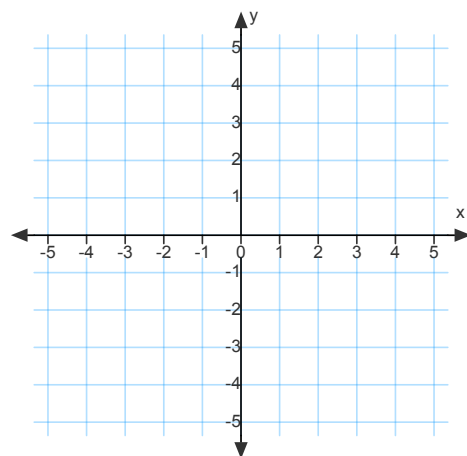
Solution: (3, -2)

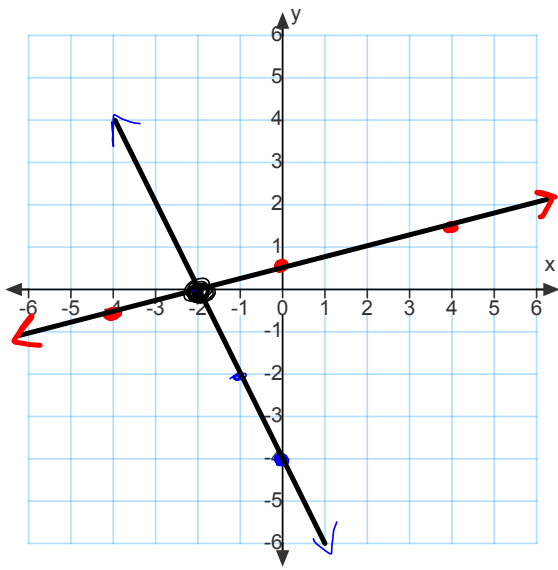
Solve by Graphing

(number 2 on worksheet)

$$-5x + 2y = 6$$

$$-x + 2y = -2$$

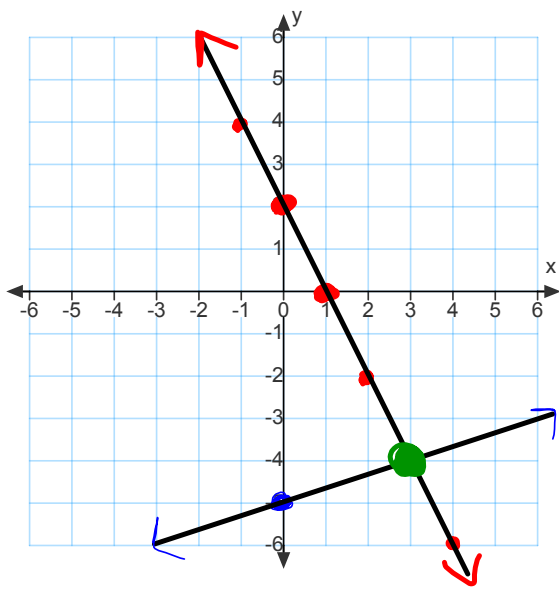




$$y = \frac{1}{4}x + .5$$

$$y = -2x - 4$$

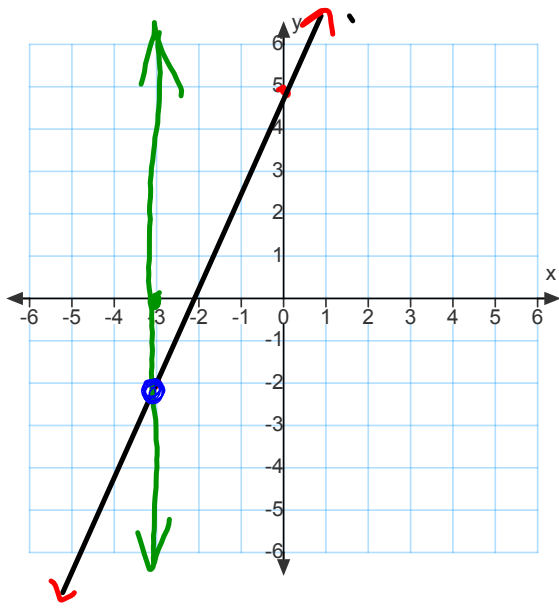
$$(-2, 0)$$



$$y = -2x + 2$$

$$y = \frac{1}{3}x - 5$$

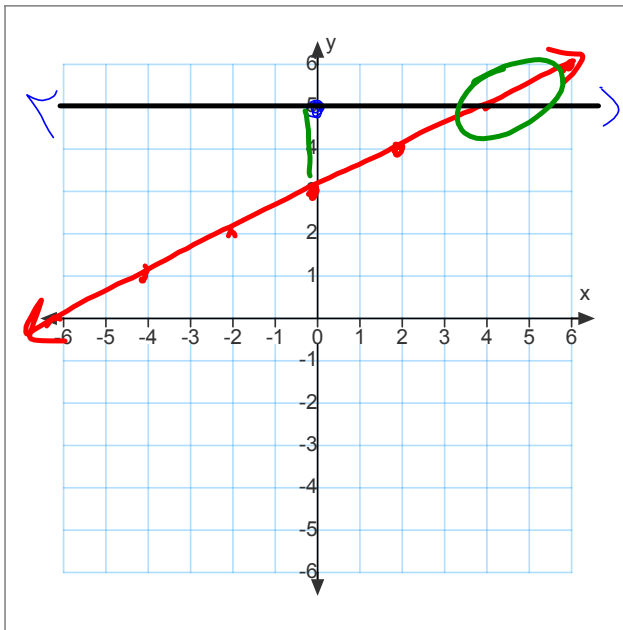
$(3, -4)$



$$y = \frac{7}{3}x + 5$$

$$x = -3$$

$$(-3, -2)$$



$$y = \frac{1}{2}x + 3$$

$$y = 5$$

$$(4, 5)$$